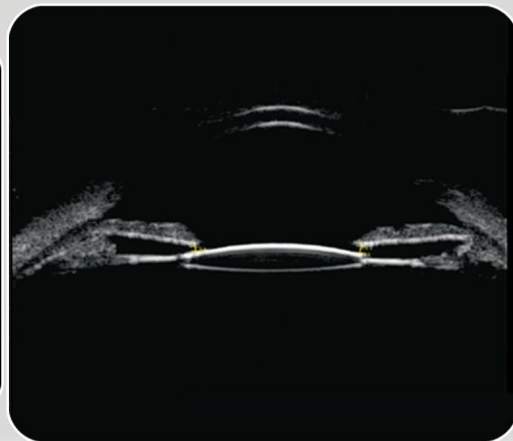
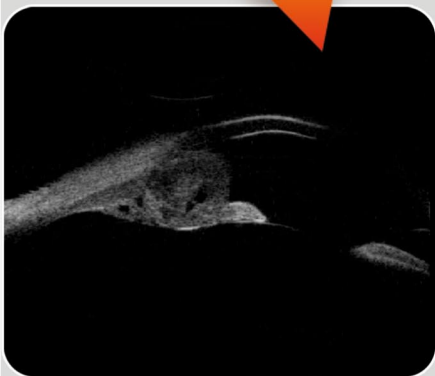


Compact Touch[®] STS UBM[™]

Ultrasound Biomicroscope





Compact Touch **STS UBM™**

Quantel Medical's cutting edge technology in ultrasonography has brought constant and multiple innovations to ultrasound specialists worldwide since 1993.

The Compact Touch STS UBM™ is the portable ultrasonic biomicroscope (UBM) from Quantel Medical for imaging the eye from the cornea to the lens.

In comparison to optical technologies, ultrasound can travel through opaque media and pigmented tissues to produce high quality images of ocular structures, especially behind the iris. The angle, ciliary bodies, crystalline lens and IOL are easily visualized with the Compact Touch UBM™.

■ Ease of Use

The Compact Touch STS UBM™'s user friendly software offers quick access to all functions thanks to easily identifiable icons.

Still images and video sequences can easily be reviewed in order to select the best scan.

The software includes an eye diagram allowing the user to document the probe orientation and accurately label echograms.

The structures adjacent to the probe are continuously displayed on the right hand side of the screen.

No more limitation of use related to sterility, comfort and safety, Compact Touch STS UBM™'s lightweight probe is compatible with the Clearscan® cover. The patient can be examined in a seated position.



■ Image Quality

Quantel Medical's proprietary linear scanning and automotive technology allows for maximized perpendicularity to tissues, throughout the examining field.

The greater signal intensity provides superior imaging of the anterior chamber and other ocular structures.

Images are displayed on a high resolution touch screen.

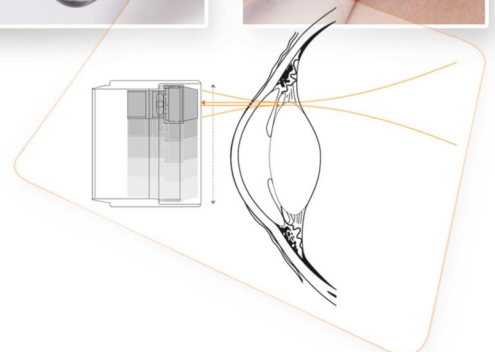


■ Mobile Versatility

Weighing less than 5 kgs (11 lbs), Compact Touch STS UBM™ is easy to transport.

The built-in patient and user databases provide unlimited access to information.

EMR compatible, Compact Touch STS UBM™ connects to any compatible software for data storage.



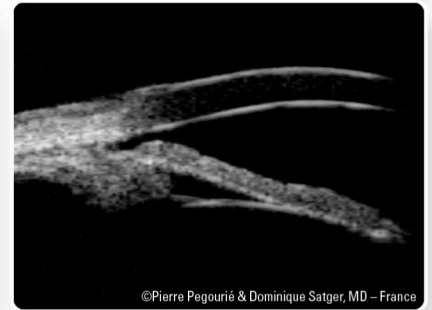
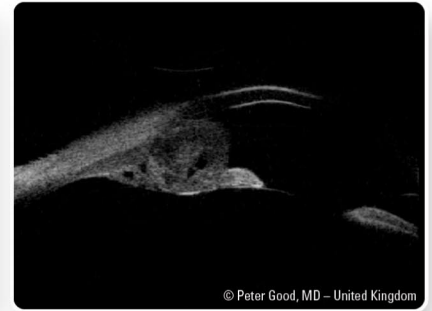
Ultrasound Biomicroscope

■ Compact Touch STS UBM™ and Glaucoma

The Compact Touch STS UBM™ is the diagnostic tool able to qualify and quantify the angle closure in glaucoma patients.

It provides excellent viewing of the structures located behind the iris leading to a better understanding of the various causes of angle closure such as pupil block, iris plateau, tumors and cysts.

UBM examination assists the physician to make a more informed treatment plan.



■ Compact Touch STS UBM™ and Post Treatment Evaluation

Compact Touch STS UBM™ is also used for surgical prognostic in case of filtration surgery.

Trabeculectomy filtering blebs and tube shunts can easily be visualized.

In post iridotomy, UBM imaging is also used to assess the treatment efficiency.



■ Compact Touch STS UBM™ and Refractive Surgery

For anterior chamber IOLs, Compact Touch STS UBM™ allows the viewing of the entire anterior chamber in one single scan.

The anatomy of the anterior chamber can be easily checked and the angle to angle measurement easily performed.

Consider the Compact Touch STS UBM™ for sulcus to sulcus measurements prior to phakic IOL implantation.

The optional STS module allows an automatic measurement of the sulcus-to-sulcus, lens curvature and anterior chamber depth.

ICL nomograms are available to pre-visualize the post-operative position. It helps determining the appropriate sizing, selecting the most suitable ICL and improving the post-operative results.



Compact Touch[®] STS UBM™

TECHNICAL SPECIFICATIONS

UBM PROBE

Transducer frequency:	50 MHz
Linear transducer movement:	exploration width 16 mm (0.63")
Focus:	9 to 11 mm (0.35" to 0.43")
Axial resolution:	35 µm
Lateral resolution:	60 µm
Adjustable gain:	20 to 110 dB
Time Gain Control (TGC):	0 to -30 dB
Dynamic range adjustment:	from 20 to 90 dB

DATA MANAGEMENT

Built-in physician and patient database
Exportation of still images and video sequences
Customizable digital and printed reports
EMR compatible
Compatible with PC and USB video printers
Storage of still images and video sequences (up to 10 second duration) on hard disk
Image post-processing tools: calipers, areas, angles, markers, comments

GENERAL INFORMATION

Back-lit LCD color touch screen monitor	
Definition:	1024 x 768 x 256 grey levels
<i>Electrical requirements</i>	
Power supply:	100-240 Vac ±10% single phase without earth
Frequency:	47/63 Hz
Power:	70 VA max

<i>Features</i>	
Overall dimensions:	37.5 cm (W) x 10 cm (D) x 27 cm (H) 14.76" (W) x 3.94" (D) x 10.63" (H)
Touch screen dimensions:	10.4" - 21 cm (W) x 16 cm (H) 8.3" (W) x 6.3" (H)
Weight:	4.28 Kg (9.26 lb)
Ports:	2 USB, 1 ethernet

Peripherals and accessories
Keyboard* with USB
Mouse with USB
External PC printer Windows® 7 (32 bits) compatible*
Video printer with USB connection*
Footswitch
Carrying case
Connection to medical servers via EMR

(* Option)

Specifications are subject to change without notice.

©2013.Quantel Medical, Compact Touch STS UBM™ is a registered trademark of Quantel Medical. All rights reserved.

www.quantel-medical.com

Headquarters

Quantel Medical
11, rue du Bois Joli - CS40015
63808 Cournon d'Auvergne - FRANCE
Tel: +33 (0)4 73 745 745
Fax: +33 (0)4 73 745 700
E-mail: contact@quantel-medical.fr

North America

Quantel USA
601 Haggerty Lane
Bozeman, MT 59715 - USA
Tel: +1 877 782 6835
Fax: +1 406 522 2005
E-mail: info@quantelmedical.com

Representative Offices

Thailand, Chiang Mai
Brazil, Rio De Janeiro

 Quantel
medical


0459
ISO 9001-13485